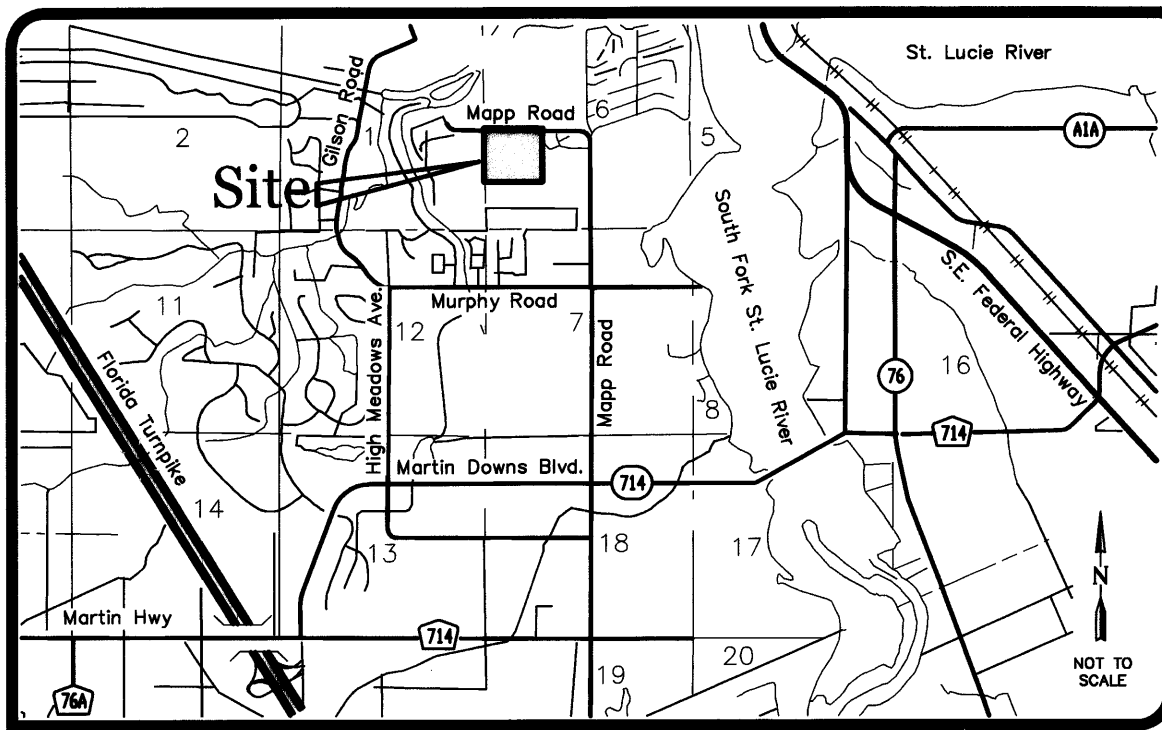


Palm Cove Golf & Yacht Club Phases 21 & 22, A P.U.D.(r)

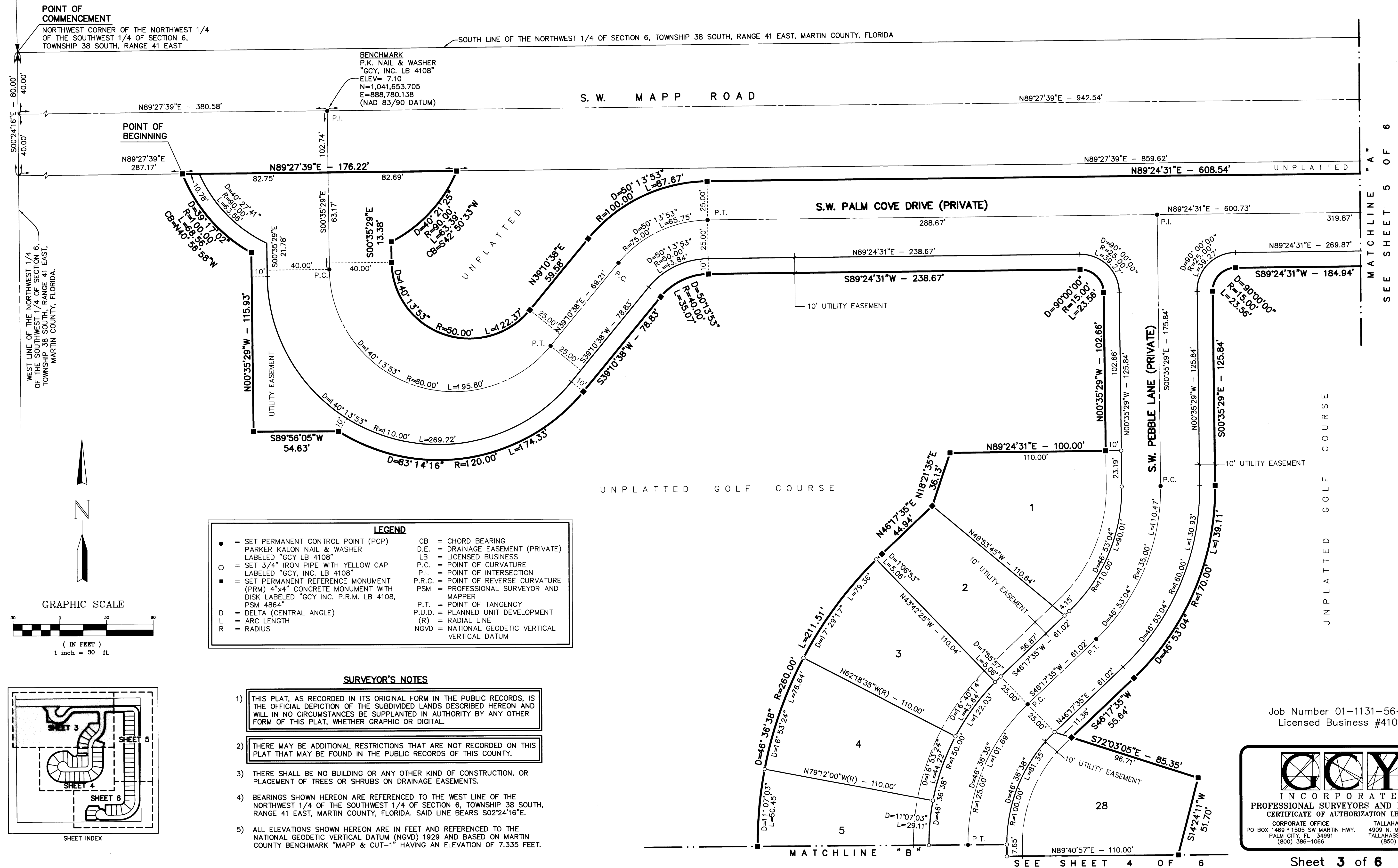
Plat Book 15
Page 42

Being a parcel of land lying in the Northwest 1/4 of the Southwest 1/4 of
Section 6, Township 38 South, Range 41 East, Martin County, Florida

October 2002



LOCATION MAP



POINT OF COMMENCEMENT
NORTHWEST CORNER OF THE NORTHWEST 1/4 OF THE SOUTHWEST 1/4 OF SECTION 6, TOWNSHIP 38 SOUTH, RANGE 41 EAST

POINT OF BEGINNING
N89°27'39"E 287.17'

BENCHMARK
P.K. NAIL & WASHER
"GCY, INC. LB 4108"
ELEV= 7.10
N=1,041,653.705
E=888,780.138
(NAD 83/90 DATUM)

SOUTH LINE OF THE NORTHWEST 1/4 OF SECTION 6, TOWNSHIP 38 SOUTH, RANGE 41 EAST, MARTIN COUNTY, FLORIDA

S.W. MAPP ROAD
N89°27'39"E - 942.54'

S.W. PALM COVE DRIVE (PRIVATE)
288.67'

S.W. PEBBLE LANE (PRIVATE)
175.84'

UNPLATTED GOLF COURSE

UNPLATTED

UTILITY EASEMENT

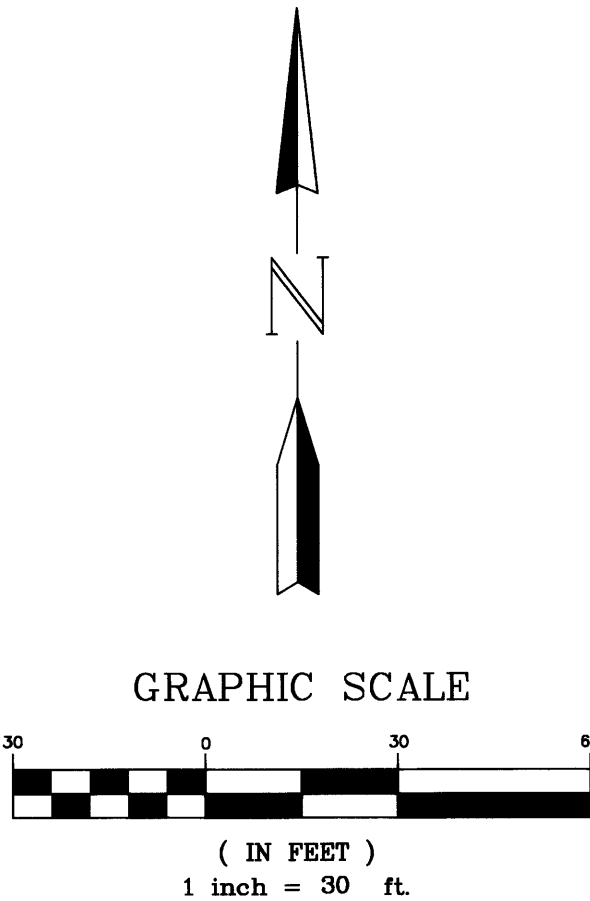
10' UTILITY EASEMENT

MATCHLINE "A"

MATCHLINE "B"

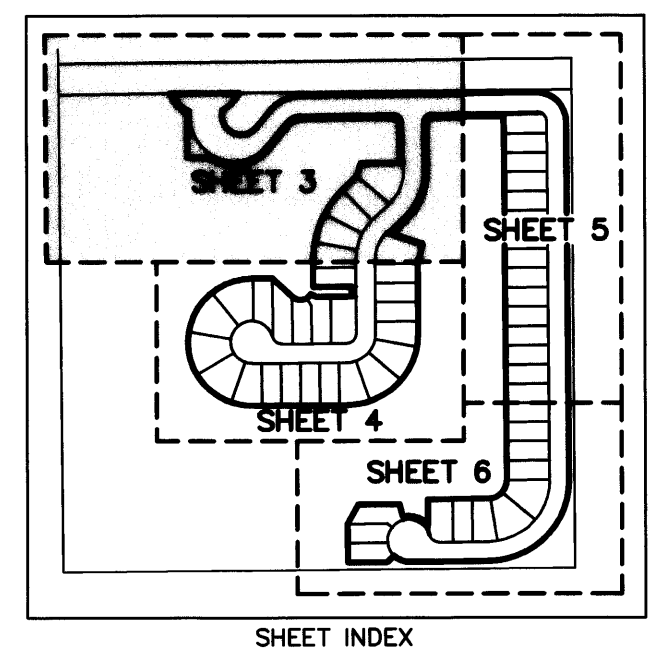
SEE SHEET 5 OF 6

SEE SHEET 4 OF 6



LEGEND	
●	= SET PERMANENT CONTROL POINT (PCP) PARKER KALON NAIL & WASHER LABELED "GCY LB 4108"
○	= SET 3/4" IRON PIPE WITH YELLOW CAP LABELED "GCY, INC. LB 4108"
■	= SET PERMANENT REFERENCE MONUMENT (PRM) 4"x4" CONCRETE MONUMENT WITH DISK LABELED "GCY INC. P.R.M. LB 4108, PSM 4864"
D	= DELTA (CENTRAL ANGLE)
L	= ARC LENGTH
R	= RADIUS
CB	= CHORD BEARING
D.E.	= DRAINAGE EASEMENT (PRIVATE)
LB	= LICENSED BUSINESS
P.C.	= POINT OF CURVATURE
P.I.	= POINT OF INTERSECTION
P.R.C.	= POINT OF REVERSE CURVATURE
PSM	= PROFESSIONAL SURVEYOR AND MAPPER
P.T.	= POINT OF TANGENCY
P.U.D.	= PLANNED UNIT DEVELOPMENT
(R)	= RADIAL LINE
NGVD	= NATIONAL GEODETIC VERTICAL DATUM

- SURVEYOR'S NOTES**
- 1) THIS PLAT, AS RECORDED IN ITS ORIGINAL FORM IN THE PUBLIC RECORDS, IS THE OFFICIAL DEPICTION OF THE SUBDIVIDED LANDS DESCRIBED HEREON AND WILL IN NO CIRCUMSTANCES BE SUPPLANTED IN AUTHORITY BY ANY OTHER FORM OF THIS PLAT, WHETHER GRAPHIC OR DIGITAL.
 - 2) THERE MAY BE ADDITIONAL RESTRICTIONS THAT ARE NOT RECORDED ON THIS PLAT THAT MAY BE FOUND IN THE PUBLIC RECORDS OF THIS COUNTY.
 - 3) THERE SHALL BE NO BUILDING OR ANY OTHER KIND OF CONSTRUCTION, OR PLACEMENT OF TREES OR SHRUBS ON DRAINAGE EASEMENTS.
 - 4) BEARINGS SHOWN HEREON ARE REFERENCED TO THE WEST LINE OF THE NORTHWEST 1/4 OF THE SOUTHWEST 1/4 OF SECTION 6, TOWNSHIP 38 SOUTH, RANGE 41 EAST, MARTIN COUNTY, FLORIDA. SAID LINE BEARS S02°24'16"E.
 - 5) ALL ELEVATIONS SHOWN HEREON ARE IN FEET AND REFERENCED TO THE NATIONAL GEODETIC VERTICAL DATUM (NGVD) 1929 AND BASED ON MARTIN COUNTY BENCHMARK "MAPP & CUT-1" HAVING AN ELEVATION OF 7.335 FEET.



Job Number 01-1131-56-01
Licensed Business #4108

GCY
INCORPORATED
PROFESSIONAL SURVEYORS AND MAPPERS
CERTIFICATE OF AUTHORIZATION LB 4108

CORPORATE OFFICE: PALM CITY, FL 34991
TALLAHASSEE OFFICE: 4909 N. MONROE STREET, TALLAHASSEE, FL 32303
(800) 386-1066 (850) 536-8455